

Hats/Caps

Men's hats can be found made of straw, felt and palm leaf are the three most common materials for men's hats in the 1870's.

Cravat or tie

Knotted ties, cravats, "string" ties, or Bowties of period styles are worn unless the occasion is very informal.

Shirt

19th century shirts came in a variety of colors and patterns but shared one basic trait, they were a pull over style

Suspenders/Braces

Cotton web or decorative suspenders of natural fibers held gentlemen's trousers at their natural waistline.

Frock or Sack coat

These were two of the most common garments worn by men in the 19th c. For a gentleman to walk about town in his shirt and vest without his coat was considered in bad taste seeing as a mans shirtsleeves were categorized as underwear.

Vest

An essential part of a man's wardrobe no matter his social standing. They can be found in several cuts and styles. Vests can be worn even when doing heavy labor or if wearing and over shirt.

Pocket watch and chain

Watches were found in gold or silver, either stem or key wind. Watch chain/fobs of human hair, ribbons, gold or silver were also worn.

Trousers

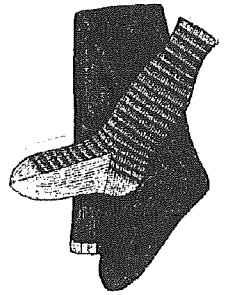
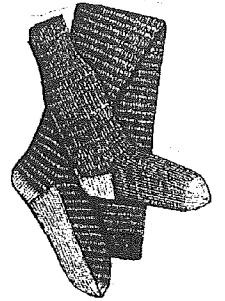
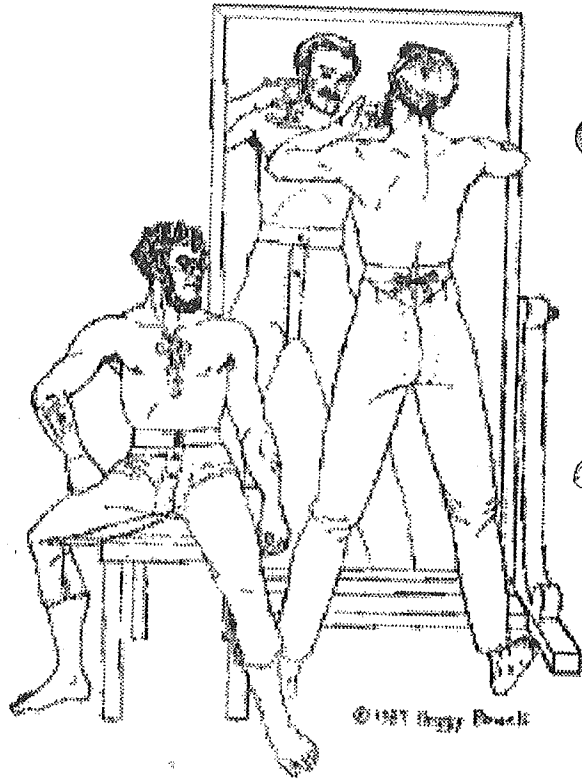
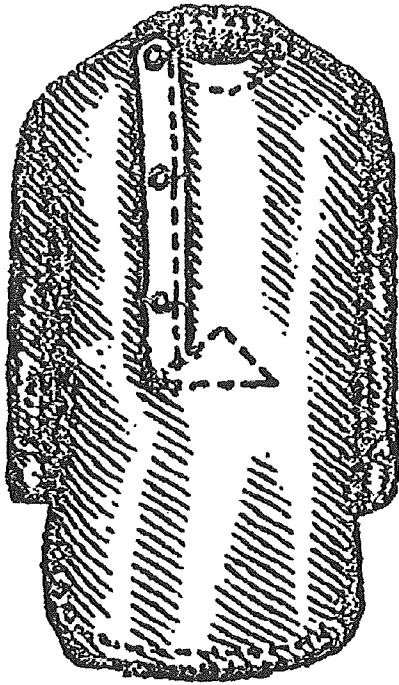
1870's trousers came in a variety of materials including wool, cotton, linen, denim, wool jean and cotton jean. Period trousers are "high-waisted" in that they were worn at the natural waist. Worn thus the vest then covers the waistband at the front and the back.

Footwear

1870 footwear came in a multitude of styles that can be broken down into two categories shoes and boots. Styles ranged to pull-on, elastic sided, lace-up and buttoned.



Gentlemen's Underclothing

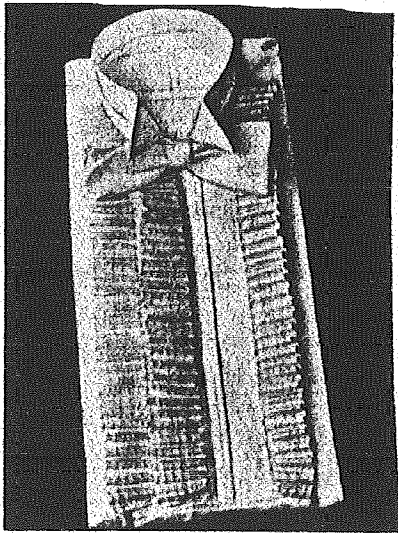
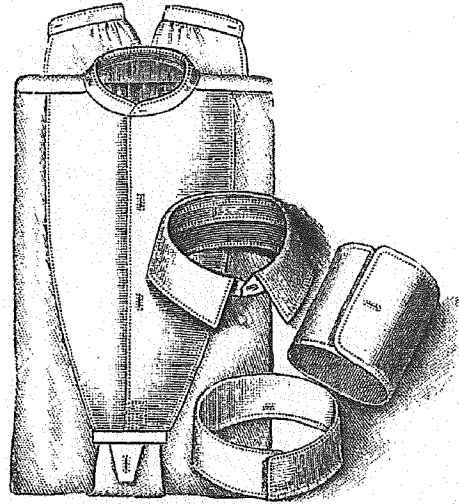
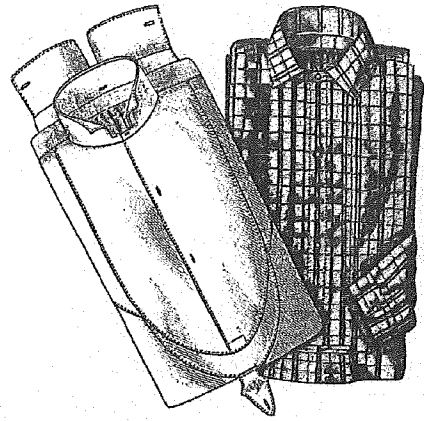
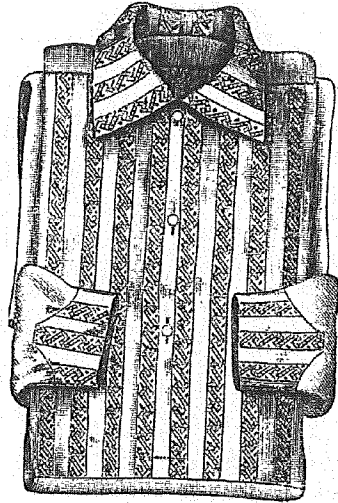


909

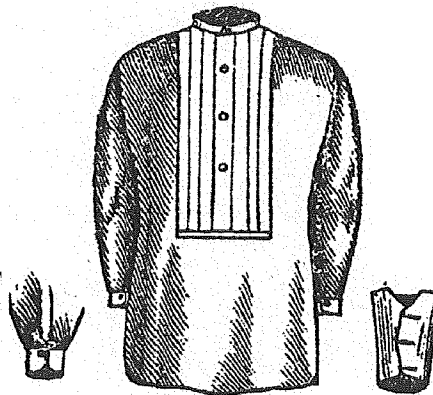
Gentlemen's Drawers:
16 sizes. Waist measures,
29 to 44 inches.
Any size, 25 cents.



Gentlemen's Shirts

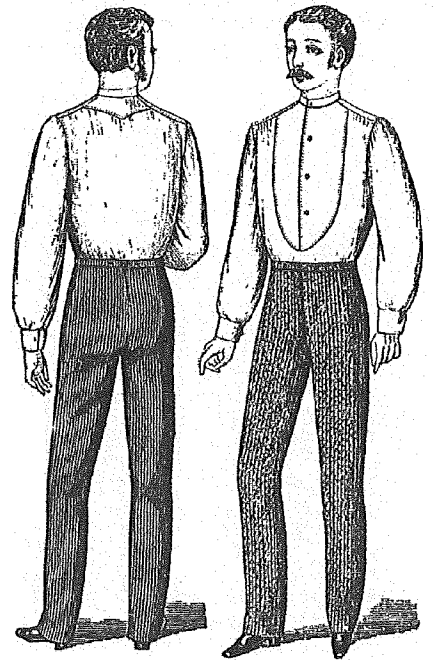


EVENING DRESS-SHIRT, COLLAR AND TIE, BY WELCH, MARGETSON AND CO., c. 1860

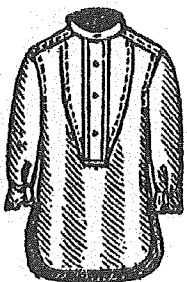


81

Gents' Shirt. All sizes; 50 cents each.



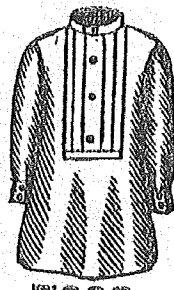
SHIRTS. FROM 'THE TAILOR AND CUTTER,' 1883



7094



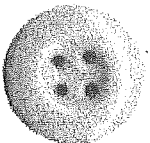
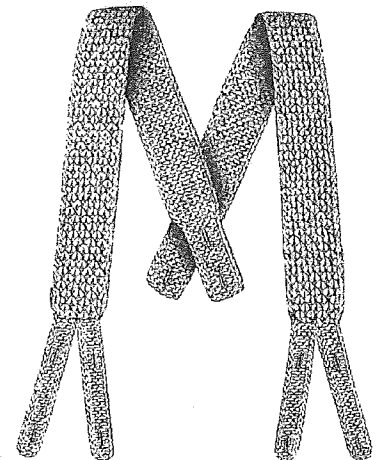
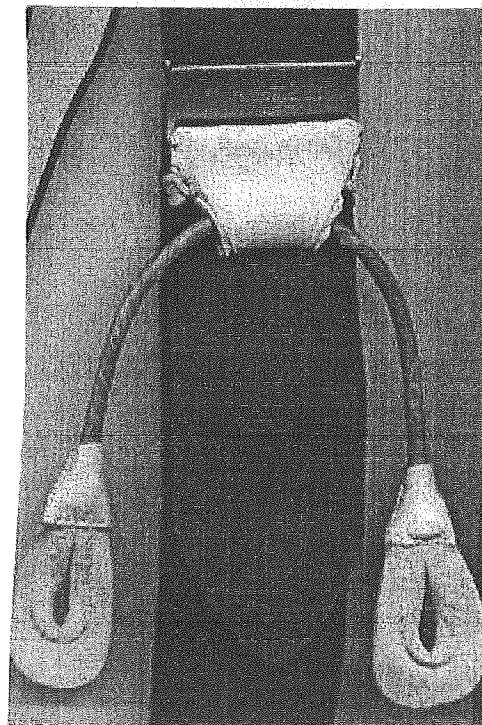
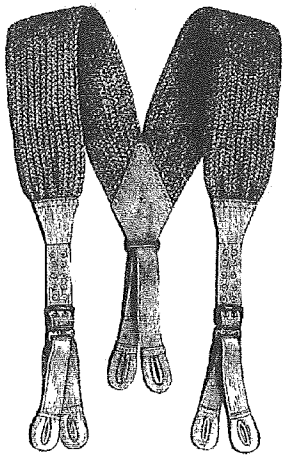
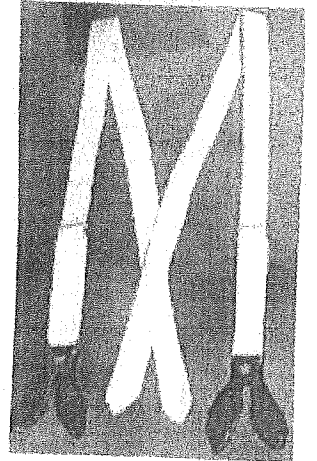
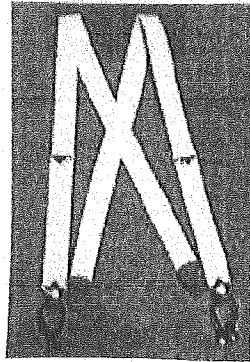
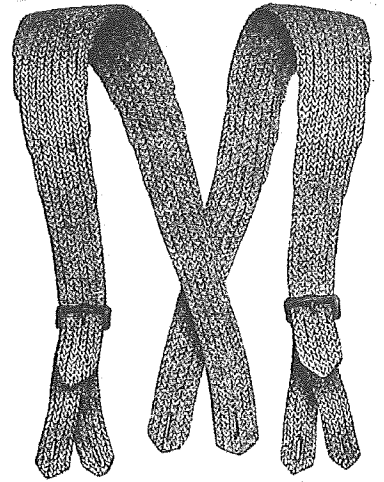
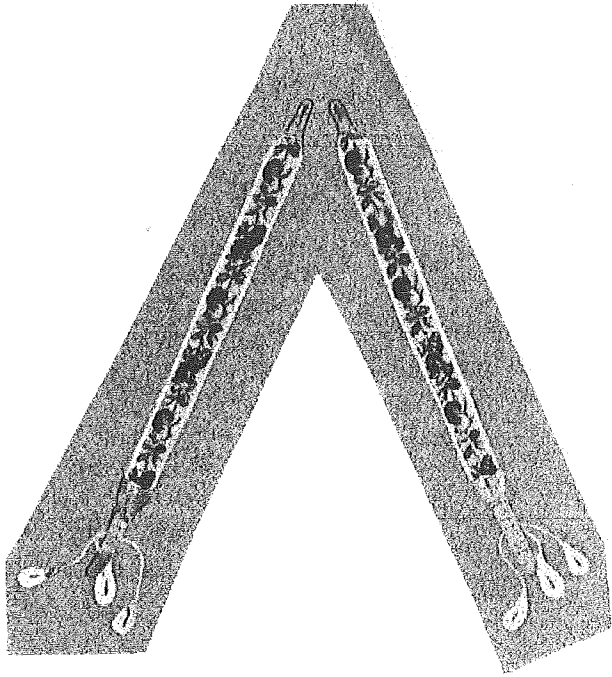
7094



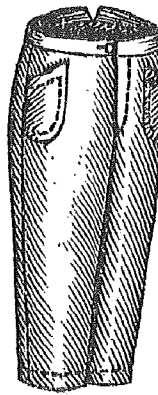
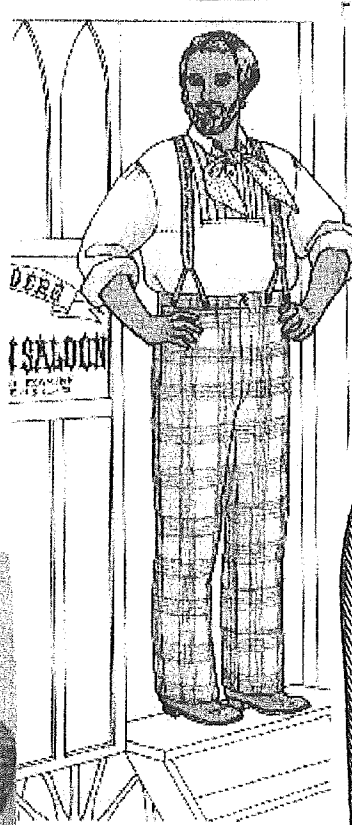
7093



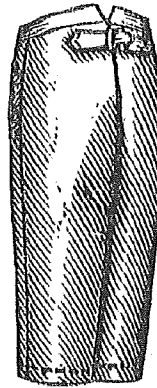
Gentlemen's Suspenders



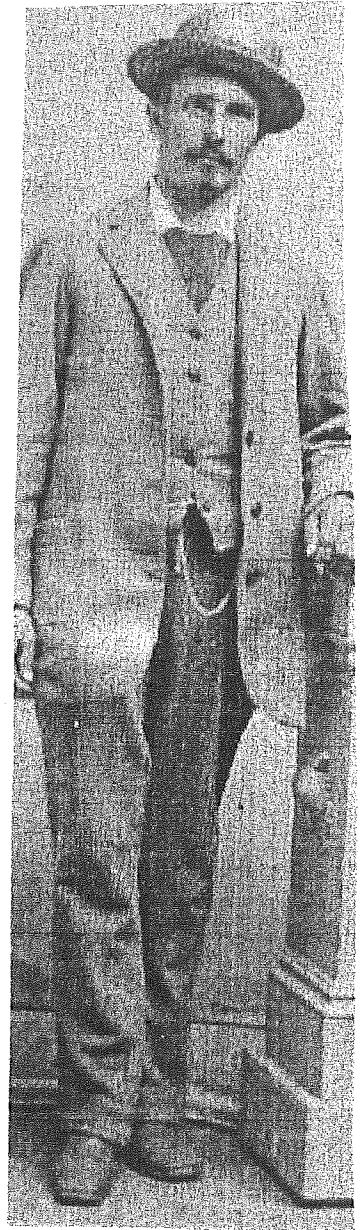
Gentlemen's Trousers



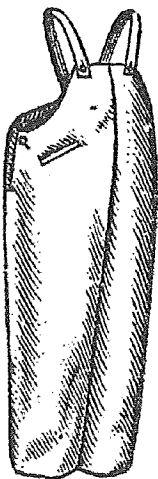
7617



7617



(Issued June, 1881.)
 Men's Working Pants:
 19 sizes. Waist meas-
 ures, 28 to 46 inches.
 Any size, 25 cents.



2746



2746



Gents' Overalls, with Apron Front.
 Waist Measures, 28 to 50 inches.
 23 sizes; 25 cents each.