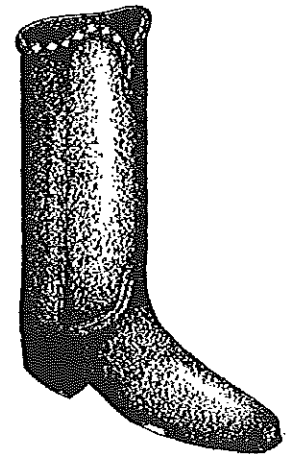
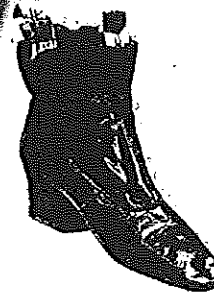
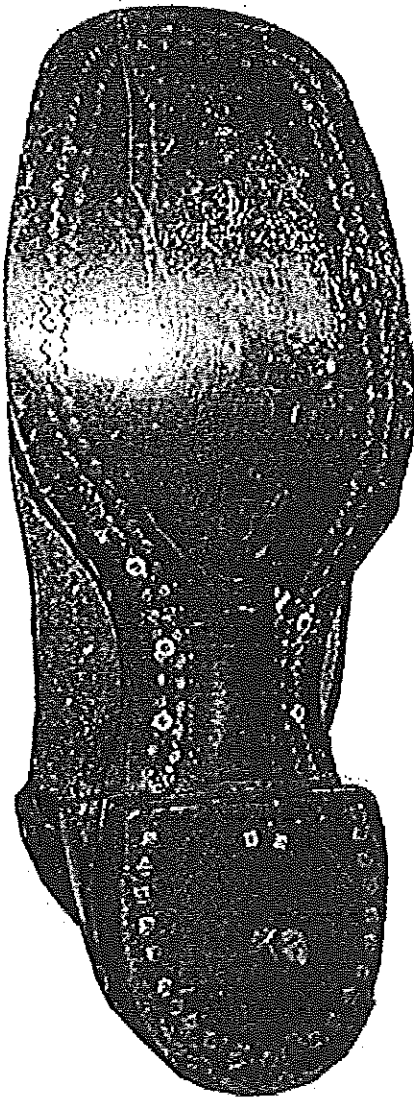
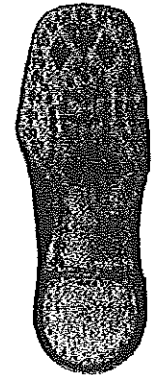
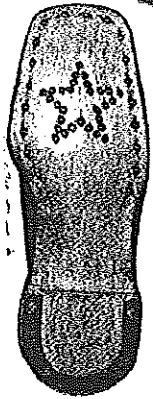
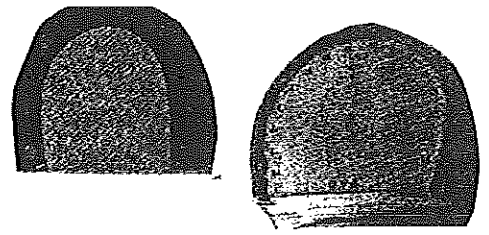
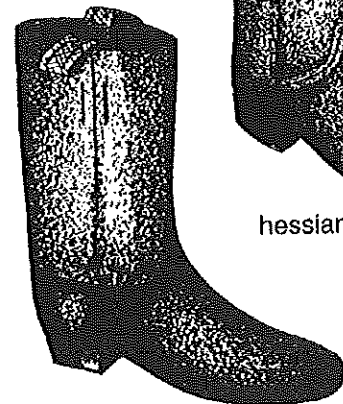


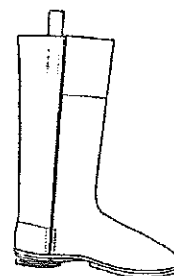
Gentlemen's Shoes and Boots



hessian boot



wellington boot



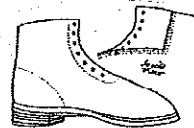
POPULAR IN THE 1860'S, THIS CANVAS SPORT SHOE HAS RUSSET LEATHER TRIM, BRASS EYELETS AND PEGGED HALF DOUBLE SOLES.



BLACK WAXED FLESH CIVILIAN LOW QUARTER, BALMORAL WITH BRASS EYELETS, SEWN SOLES.



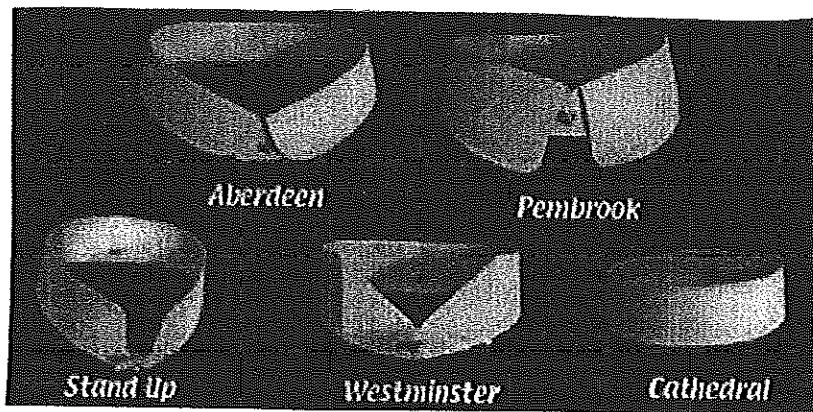
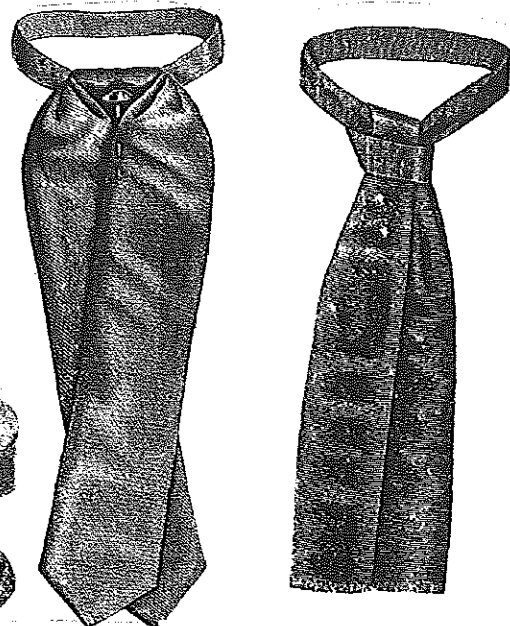
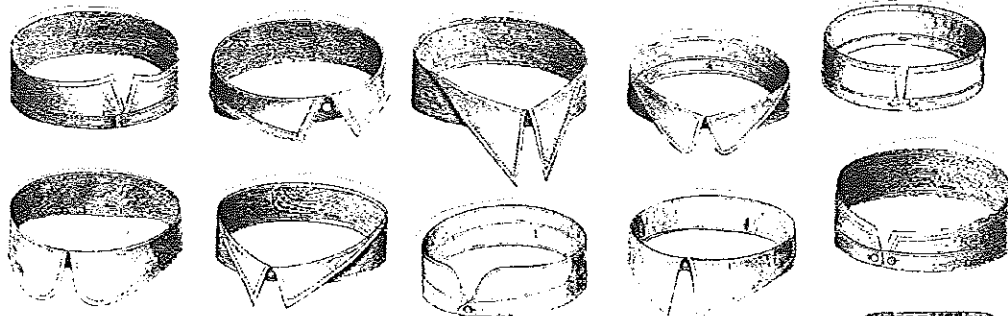
"DIRT EXCLUDER" BUCKLE CLOSURE VERSION OF THE CV-9. THESE SHOES ARE FIRST SEEN IN THE 1860'S AND REMAINED POPULAR THROUGH THE 1890'S.



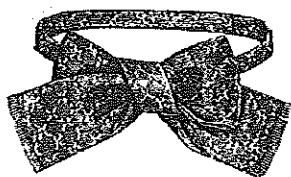
LACE-UP ENGLISH WALKING SHOE OF BLACK WAXED FLESH LEATHER. ONE PIECE UPPER WITH CUT OUT, LAP SEAMED IN BACK. PEGGED HALF DOUBLE SOLES. 1860'S - 1890'S

A 12 INCH BOOT WITH BLACK WAXED FLESH LEATHER UPPERS AND A BLACK SMOOTH OUT GRAFT. PEGGED TAP SOLES.

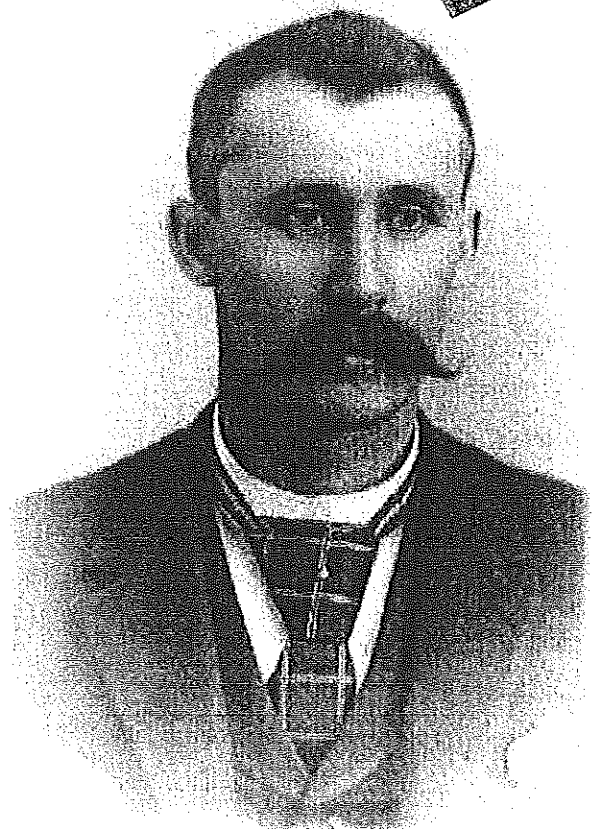
Gentlemen's Collars & Neckties



Westminster or "Patricide" Collar
With Windsor Tie



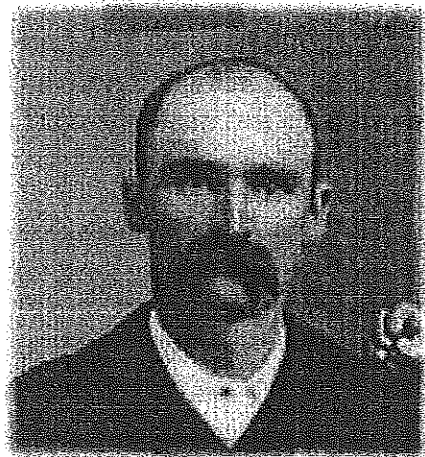
Square Knot



Windsor Tie



Bow Tie



Studded Collar with no Tie

