

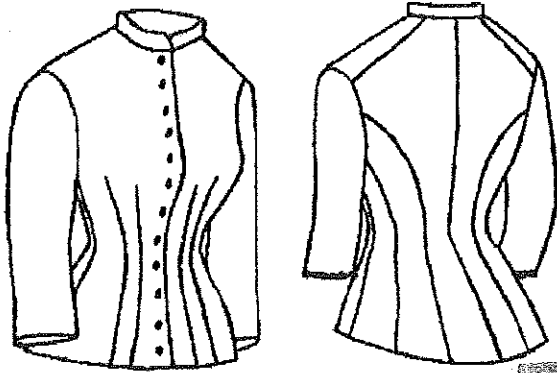
Polonaise: an over dress with fitted bodice whose sides and or back could be pulled up like draperies.



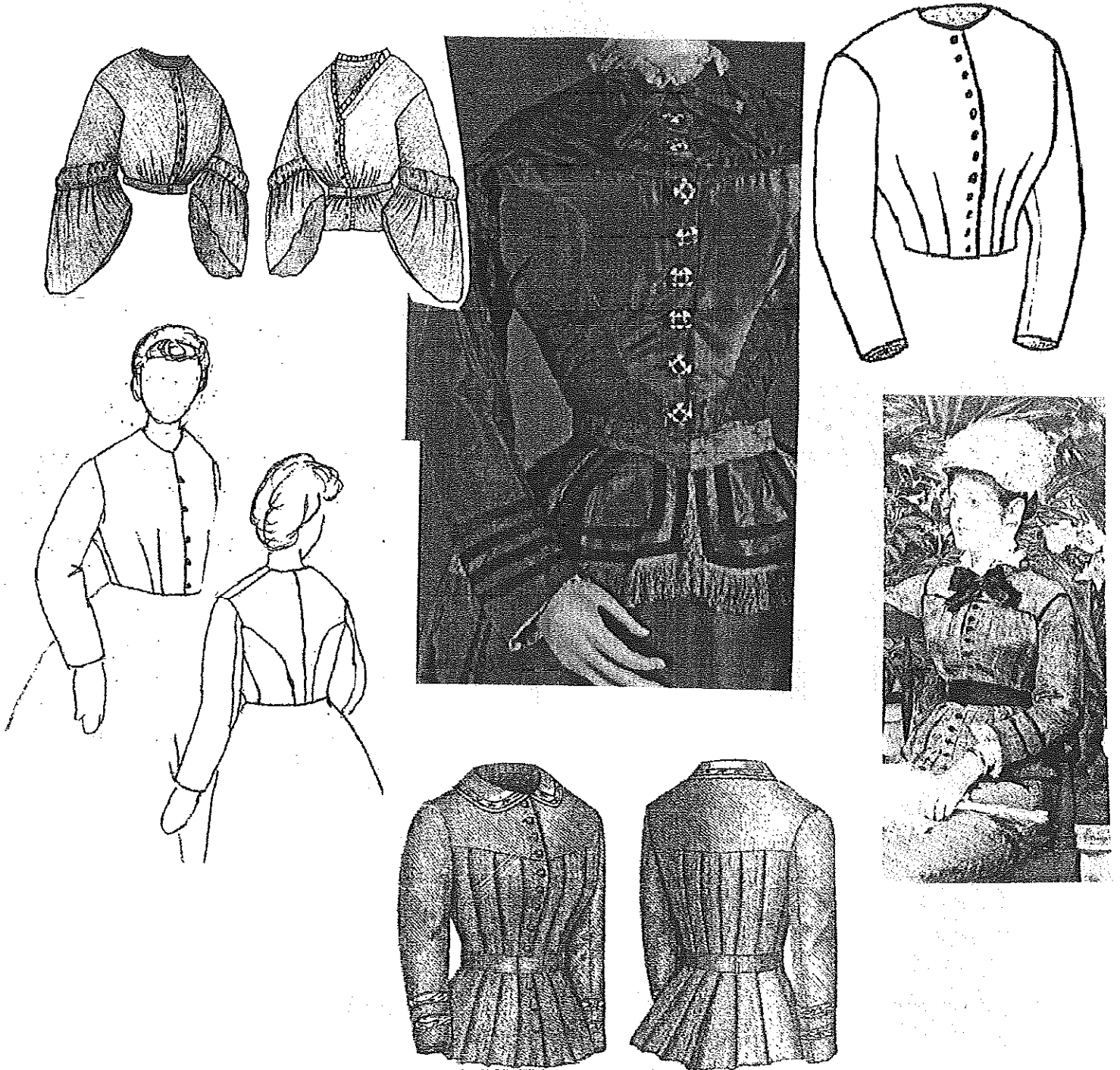
Princess or Duchess dress: Basic cut characteristics by continuous vertical panels from the neck shaped to the body through the torso and having no waist seam. Design attributed to either one of Queen Victorians daughters or Princess Eugenie of France.



Cuirass Bodice: A **basque** (any bodice that extends below the waist) with a long point front and back and curving up over the hips or sides. Gets its name from a **cuirass** breast-plate of armour that extends over the hips to protect the mounted soldier.

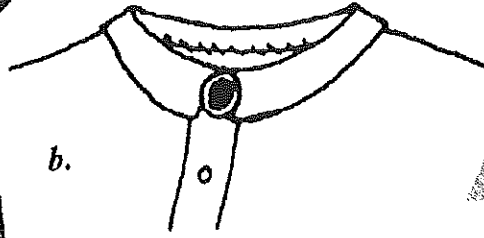
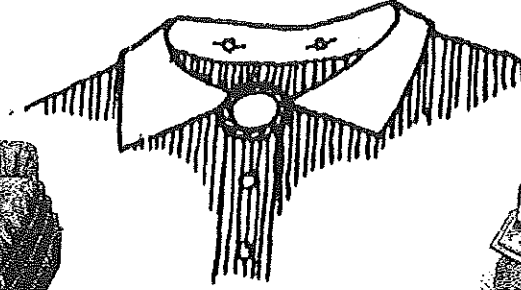


Waist: term used for: a bodice, a blouse, a shirt-waist, a body-waist, or a dress-waist, the upper part of a dress above the skirt.

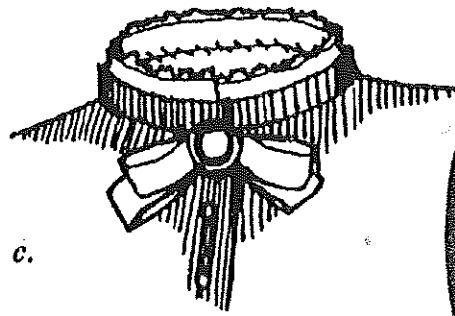
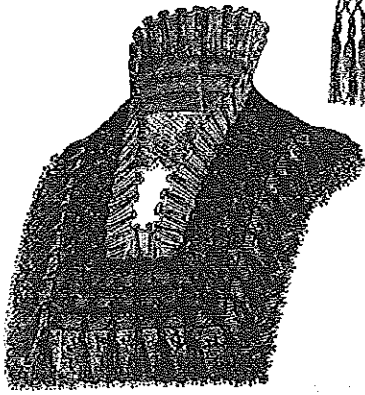


Ladies Accessories-

Collars and Ties



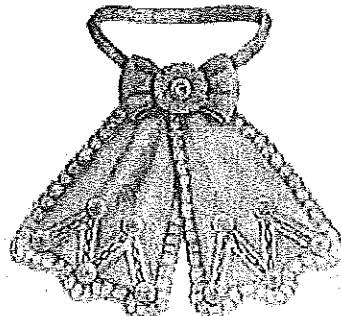
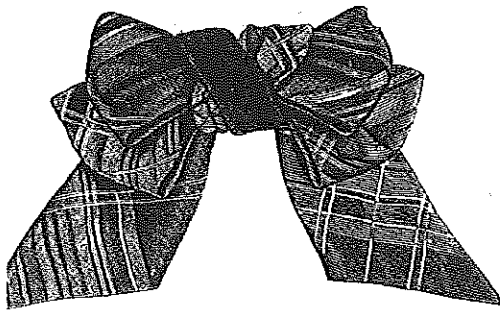
b.



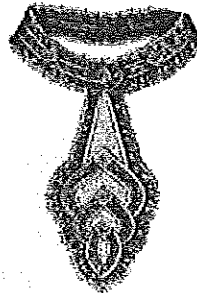
c.



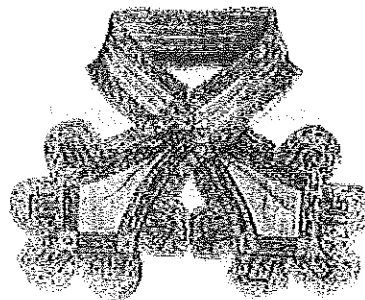
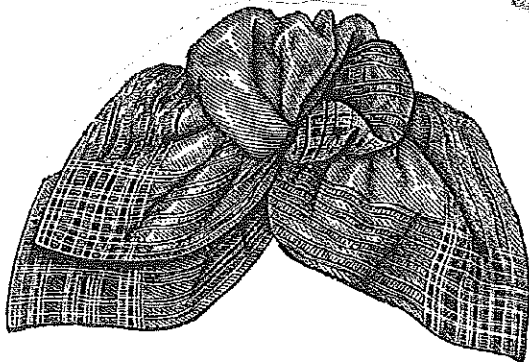
Common collar variations
 a. lay-down collar with horizontal ends
 b. lay-down collar with diagonal ends
 c. stand-up collar



Collar with Bow



Collar with Pendant



Collar with Ends



Ladies Aprons

